

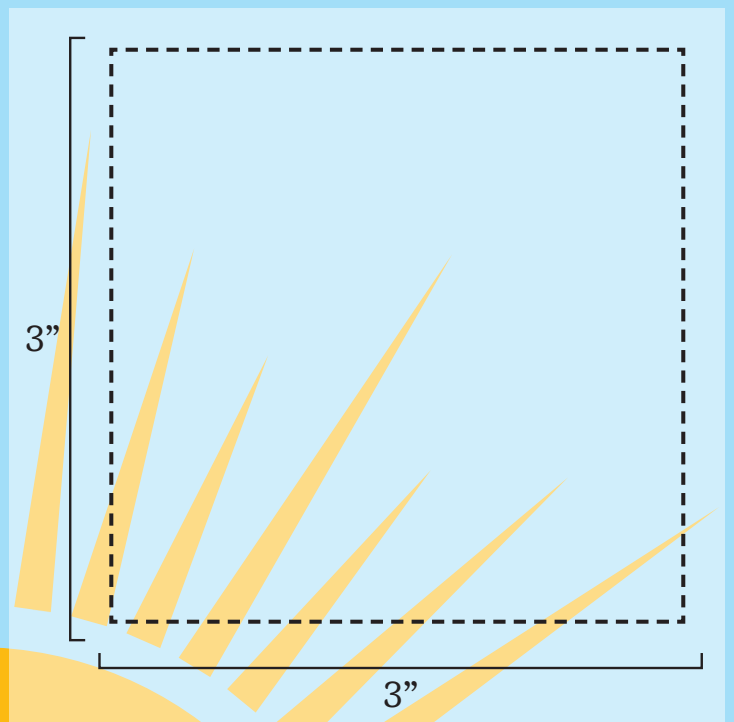
Girl Scouts of California's Central Coast Early Bird Patch Design Contest

Design Guidelines:

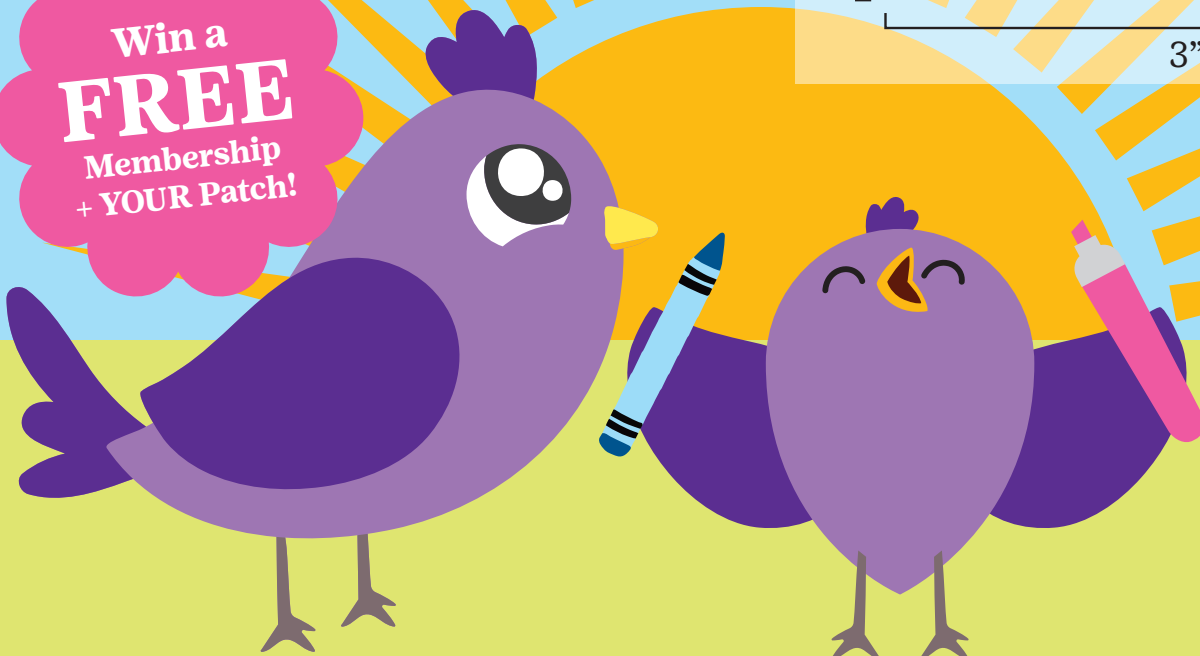
- Drawing no bigger than 3" x 3"*
- Must Incorporate "GSCCC"
- Must Incorporate Membership Year: "2024-2025"
- Colorful designs are encouraged!

Contest Runs:

December 1 - January 22



Win a
FREE
Membership
+ YOUR Patch!



Scan here to
submit your
design online!

*Final produced patch will be no larger than 2.5 inches x 2.5 inches.

girl scouts
of california's
central coast